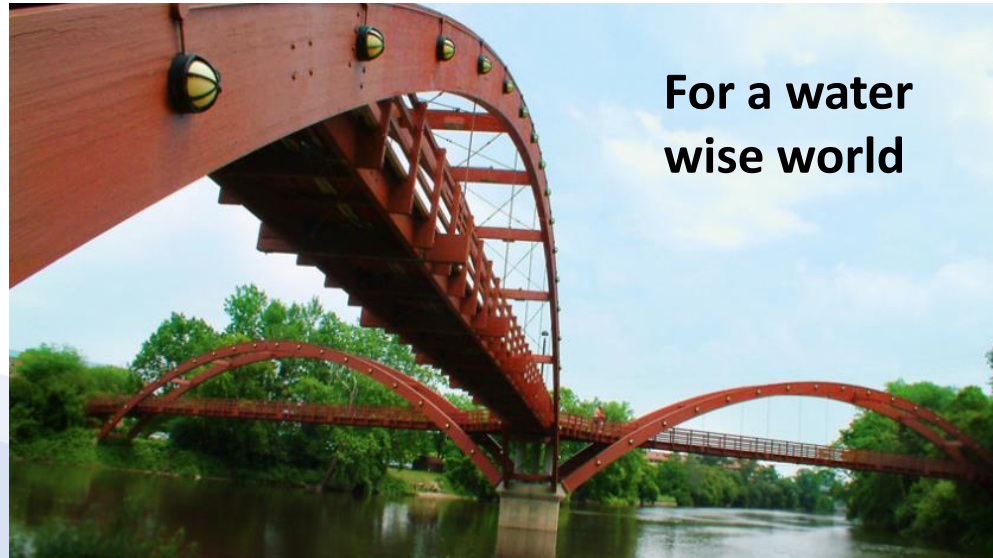


# Supporting Regional Governance in the Lower Jordan River

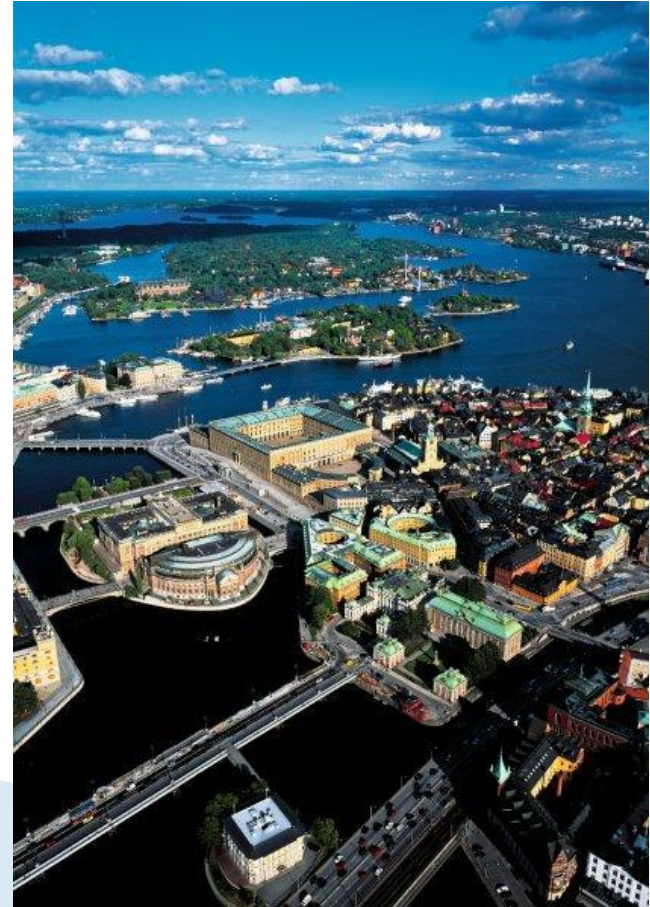


Dr Therese Sjömander Magnusson  
Director, Transboundary Water  
Management Unit, SIWI

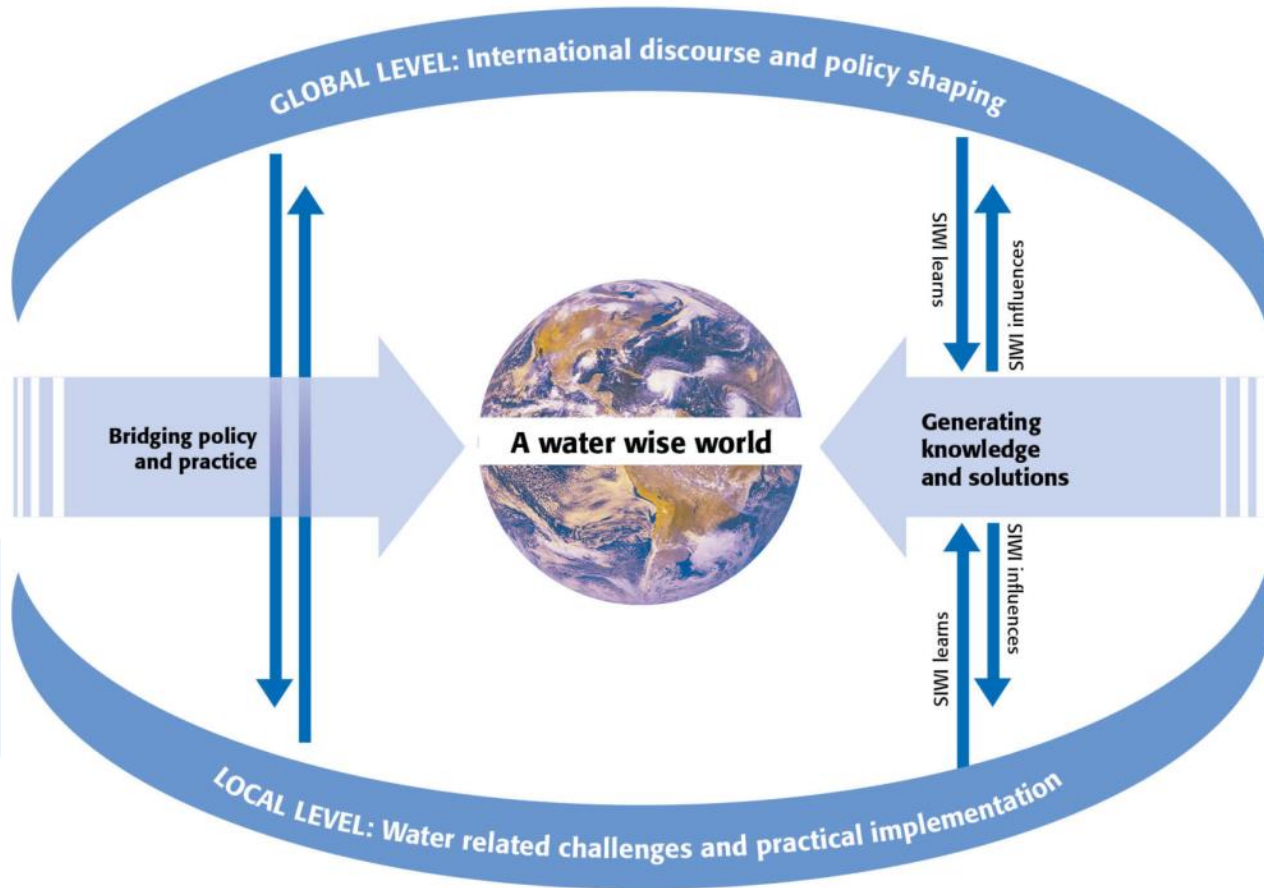
# About SIWI

The Stockholm International Water Institute (SIWI) is a policy institute that contributes to international efforts to combat the world's escalating water crisis.

- Head office in Stockholm, Sweden; Africa Regional Center in Pretoria, South Africa
- Hosting UNESCO centre "International Centre for Water Cooperation"
- 70 staff members + 10 associated experts
- Non-profit, politically neutral
- Founded in 1991
- Supported by the Swedish government, City of Stockholm and founders of the Stockholm Water Prize.
- Programmes and activities also funded by multi- and bilateral donors and international organisations/agencies.



# SIWI's mandate



# What SIWI does



Providing advice, tools, methods to support decision makers



Generating knowledge through applied research and expert studies



Strengthening capacity through global training programs



Building global networks and recognizing achievements at the World Water Week

# SIWI: Knowledge Services

## Knowledge Services



**Water governance**



**Transboundary  
water management**



**Water and climate  
change**



**Water, food and  
energy**



**Water and  
economics**

**Applied research • Advisory services • Capacity building**

**Gender • Integrity • Poverty • Human rights/Democracy • Environment**

# SIWI as a partner in the Lower Jordan River

- Partner in the **Regional NGO Master Plan** for Sustainable Development in the Lower Jordan River Program 2012-2015 with EcoPeace and GNF
- Convenor of **two regional seminars** 2012, 2014
- Convenor of **World Water Week Seminar** on Regional NGO Master Planning effort
- **Facilitated dialogue** to harmonize bi-lateral and multi-lateral donor priorities surrounding investment
- Identify hurdles and **propose options** to enable investments



# SIWI Exploring Regional Governance Options: Project Overview

- SIWI is contracted by EcoPeace
- Project is funded by Sida
- Objective: “To produce a policy tool to support EcoPeace Middle East in advancing regional cooperation for the adoption of a transboundary governance institution “
- Builds on the Regional NGO Master Plan’s governance interventions
- Draws upon global relevant practices



# Exploring Potential Governance Structures for the Lower Jordan River

A regional governance structure is a social-political process derived from the needs of the users and the geo-political context

- **Method:** SIWI asks key questions and presents a range of policy options drawn from global practice.
- **Deliverable:** A **policy tool** which will enable EcoPeace and other users to discuss various governance options including responsible national authorities.



# Key Questions support regional dialogue

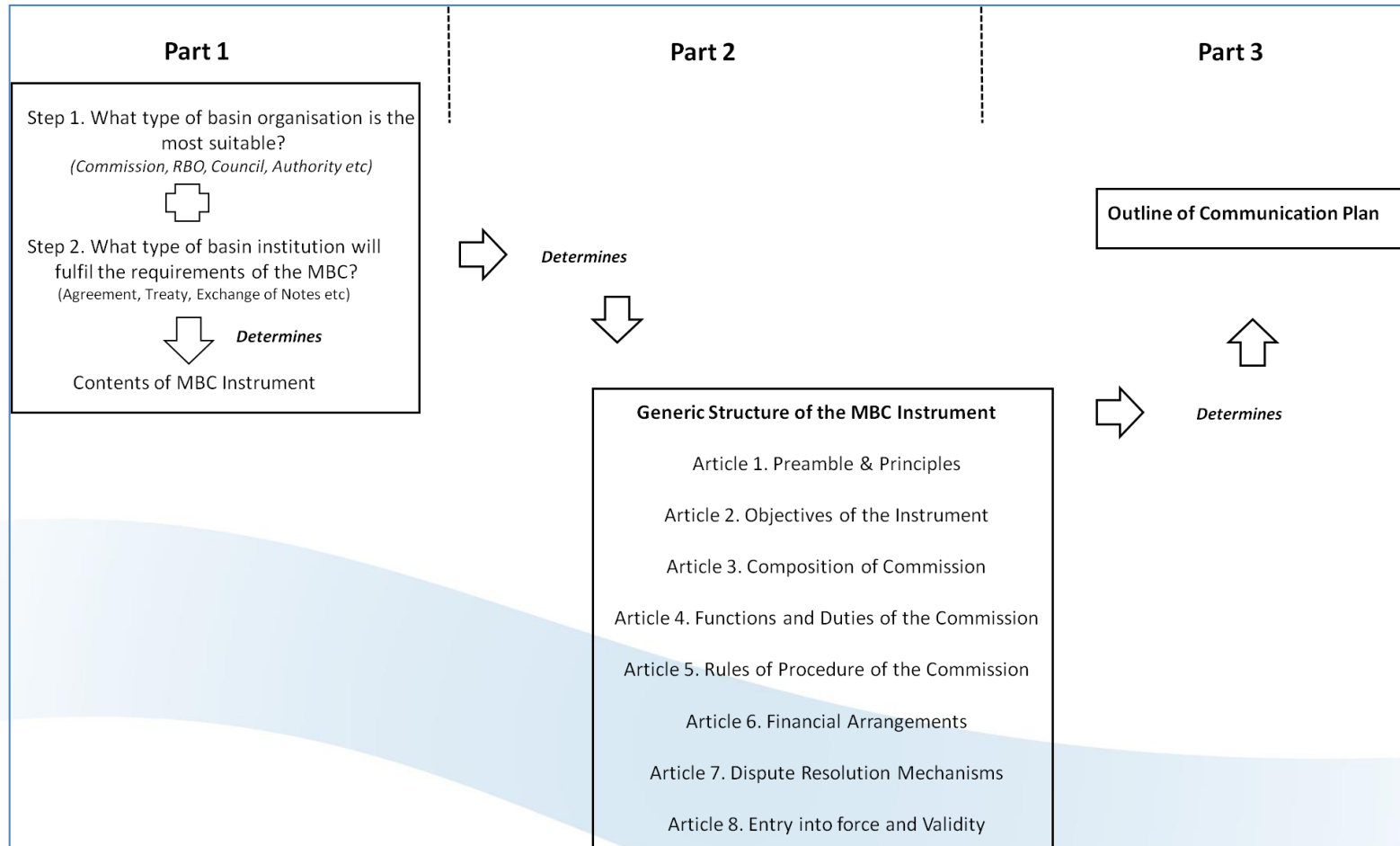
## Examples of key questions:

- What type of **basin organization** do you want? Examples: Commission, RBO, Council, Joint Committee
- What type of basin **agreement/ instrument** do you want? Examples: Agreement, Treaty, Exchange of Notes
- What type of **mandate**?

## Options of regional governance:

- Proposed **scenarios** will be explored with implications for the articles in the agreement/ instrument identified.
- **SIWI will only propose different options** - NOT suggest what is “right” or “correct” for regional stakeholders.
- Aim is **to inform discussions** on potential regional governance structures drawn from SIWI’s diverse global experience.

# Process approach to support the regional dialogue



# Timeline

June 2015:  
Inception  
Report &  
Presentation

Nov 2015:  
2<sup>nd</sup> Draft  
Submitted  
to EcoPeace

2016: Presentation at  
International Conference on  
Regional Governance in the  
Lower Jordan River



May 2015:  
SIWI  
Contracted  
by EcoPeace

Aug 2015:  
Draft Report  
Submitted  
to EcoPeace

Jan 2016:  
Final Policy  
Tool  
Submitted  
to EcoPeace

**Ongoing throughout:** EcoPeace discussions with national, regional stakeholders



# SIWI Project Team and Advisory Board

## SIWI TWM Team:

- **Dr. Therese Sjömander Magnusson**, Director
- **Ms. Elizabeth Yaari**, Programme Manager
- **Dr. Marian Patrick**, Programme Manager
- **Mr. Kerry Schneider**, Programme Manager
- **Mr. Bjorn Druse**, Director, Finance and Administration

## Project Advisory Board:

- **Mr. Anton Earle**, Director, Africa Regional Center, SIWI
- **Ms. Lena Salame**, Coordinator of PCCP, UN World Water Assessment Programme and the International Hydrological Programme of UNESCO
- **Mr. Greg Shapland**, Deputy Head of Research Analysts and Research Counsellor for the MENA, Foreign and Commonwealth Office of the UK
- **Ms. Zaki Shubber**, Lecturer, law and water diplomacy at the UNESCO-IHE Institute for Water Education
- **Dr. Neda Zawahri**, Associate Professor of Political Science at Cleveland State University

Thank you!

شكرا لاستماعكم!

תודה רבה!

Tack!

**[www.siw.org](http://www.siw.org)**



[www.siw.org](http://www.siw.org)